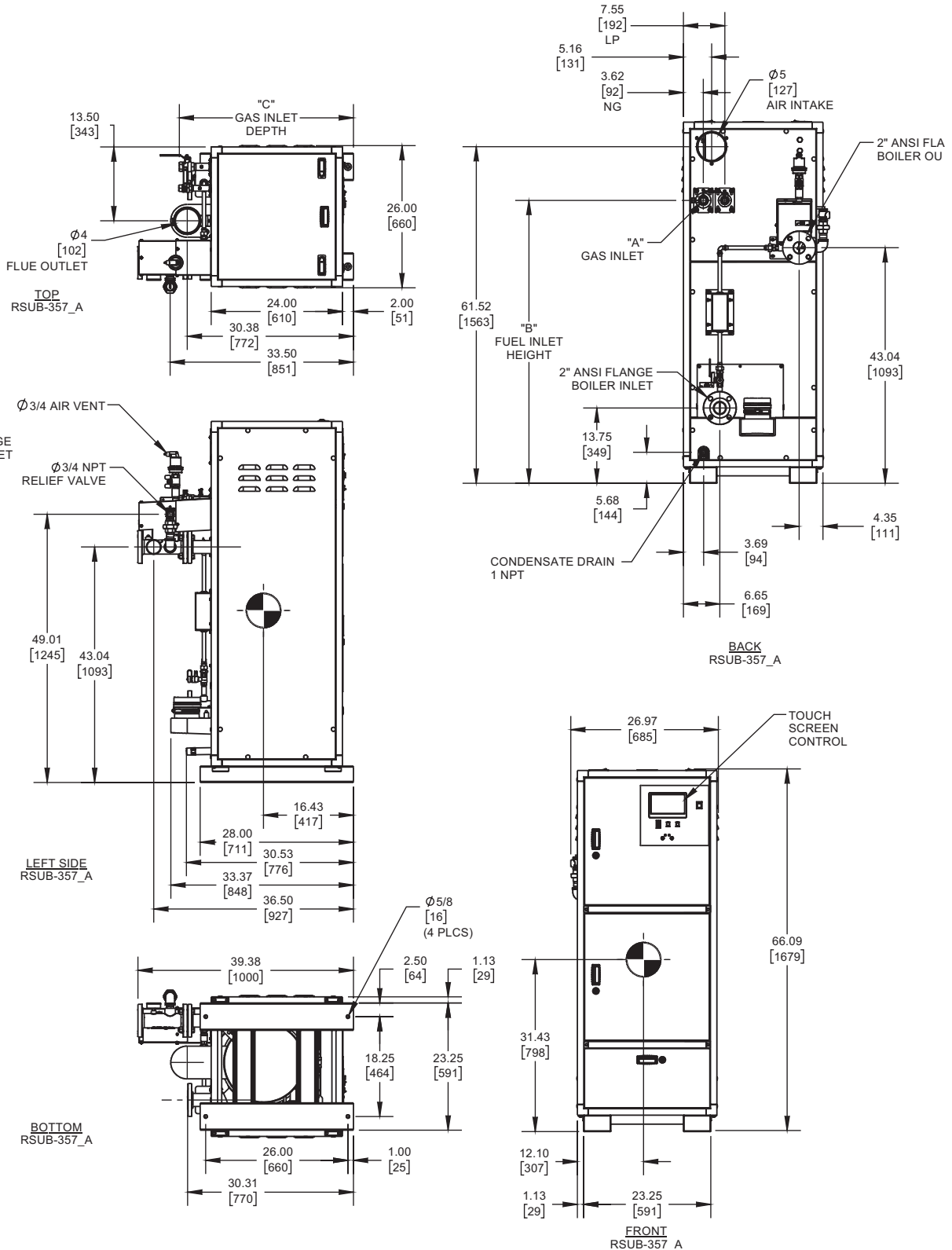


# ENCORE 350 DUAL FUEL

Category II or Category IV Appliance  
(see Installation and Operation Manual for venting information)

## INDOOR UNIT



GAS OPTION	"A"	"B"	"C"
NG	1 NPT	51.70	31.82
LP	3/4 NPT	51.70	31.91

**Notes:**

1. Dimensions are approximate and should not be used to "rough-in" equipment.
2. Dimensions are subject to change without notice.
3. All dimensions are in inches [mm].
4. Symbol indicates center of gravity.

## BOILER CERTIFIED RATINGS & CAPACITIES

<b>Fuel Type</b>	Natural/Propane Gas	<b>Boiler FLA</b>	11.2*
<b>Input BTU/hr.</b>	349,000 / 102 KW	<b>Boiler HP</b>	10.2
<b>Output BTU/hr.</b>	342,020 / 100 KW	<b>Min. Gas Pressure Required</b>	4" W.C.
<b>Electrical Requirements</b>	120 VAC/60 Hz/1PH (with neutral)	<b>Max. Gas Pressure Allowed</b>	14" W.C.
		<b>Operating Weight</b>	612 lbs. / 277.6 kg.

## BOILER TRIM & CONTROLS

<b>Main Gas Valve</b>	Dungs MBC	<b>Air Switch</b>	Huba
<b>Ignition Control</b>	Fenwal	<b>Flow Sensor</b>	SIKA
<b>Operating Control</b>	HeatNet®	<b>Blocked Flue Switch</b>	Cleveland NS2
<b>High Limit</b>	Jumo	<b>Blower Motor</b>	Ametek
<b>Relief Valve</b>	3/4" x 3/4" set @ 50 psi	<b>L.W.C.O.</b>	800

## A.S.M.E.

<b>ASME Sect IV Fire Side Htg Surface</b>	55.31 Sq. Ft. / 5.13 Sq. M.	<b>Design Data</b>	Max. 160 psig & 210°F
<b>ASME Sect IV Water Side Htg Surface</b>	77.72 Sq. Ft. / 7.22 Sq. M.	<b>Water Volume</b>	13.4 gal. / 50.7 Liters

\* Add circulator amps.

## BOILER TEMPERATURE RISE / PRESSURE DROP (Based on Full Input)

20°F / 11.1°C				30°F / 16.7°C				40°F / 22.2°C				50°F / 27.8°C				60°F / 33.3°C			
Flow Rate		Pressure Drop		Flow Rate		Pressure Drop		Flow Rate		Pressure Drop		Flow Rate		Pressure Drop		Flow Rate		Pressure Drop	
GPM	L/s	Ft	kPa	GPM	L/s	Ft	kPa	GPM	L/s	Ft	kPa	GPM	L/s	Ft	kPa	GPM	L/s	Ft	kPa
34.2	2.2	3.3	9.9	22.8	1.4	2.7	8.1	17.1	1.1	2.5	7.3	13.7	0.9	2.3	6.9	11.4	0.7	2.2	6.6

Flow GPM				Temp. Rise** (°F)				Vent Length (Equiv. Ft.)				Air Inlet Length (Equiv. Ft.)			
Min		Max		Min		Max		Min		Max		Min		Max	
11.4		34.2		20		100		6		100		0		100	

\*\* Min/Max delta t reflects boiler operation at full input. For applications requiring operation above/below these parameters please consult factory.

<b>REP FIRM</b>	_____
<b>SUBMITTED BY</b>	_____
<b>JOB NAME</b>	_____
<b>ARCHITECT</b>	_____
<b>ENGINEER</b>	_____
<b>CONTRACTOR</b>	_____
<b>DATE</b>	_____

## ENCORE 350 DUAL FUEL

**Category II or Category IV Appliance**  
(see Installation and Operation Manual for venting information)

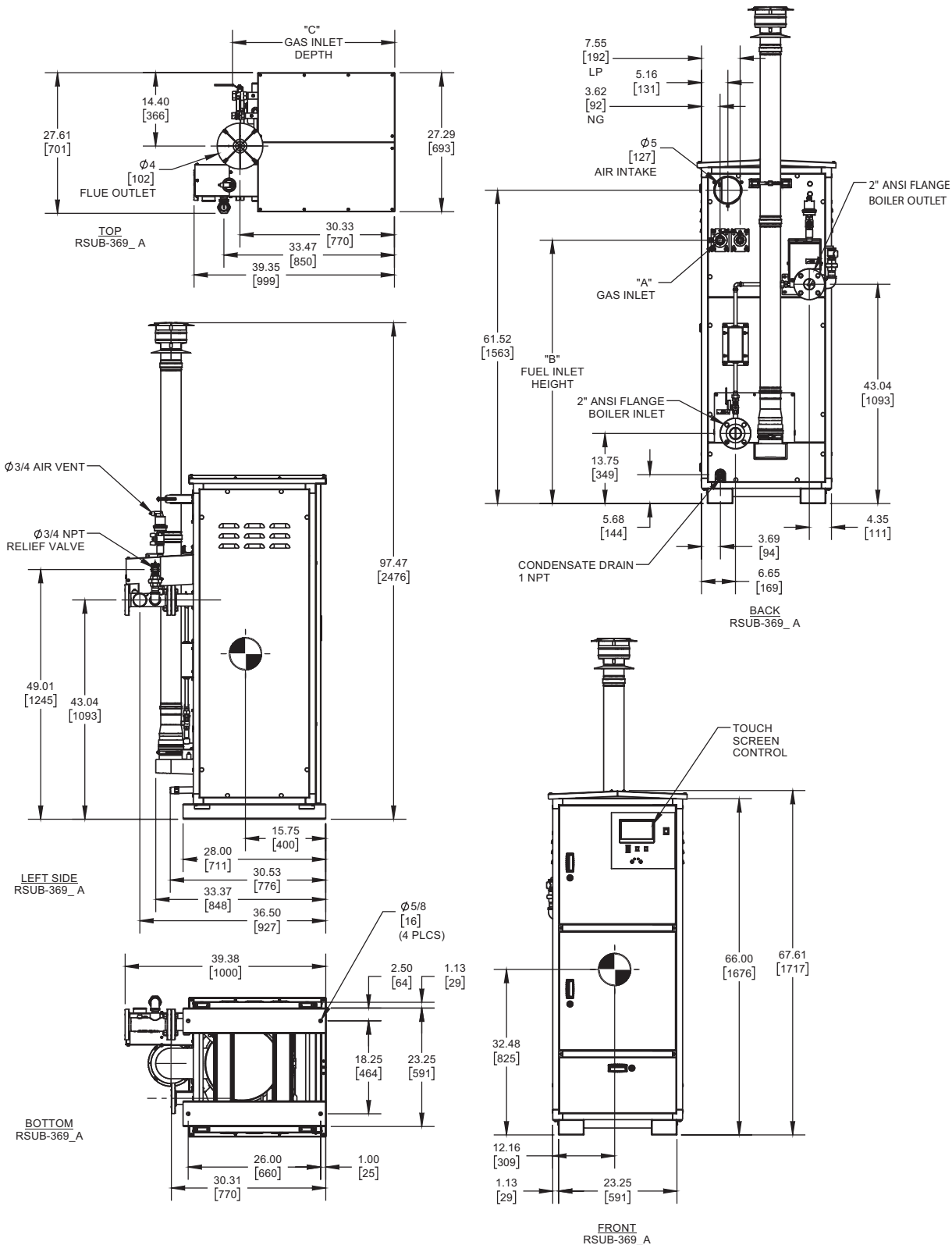


A Division of Mestek, Inc.  
Westfield, MA 01085  
(413) 564-5515

# ENCORE 350 DUAL FUEL


Category II or Category IV Appliance  
(see Installation and Operation Manual for venting information)

## OUTDOOR UNIT



GAS OPTION	"A"	"B"	"C"
NG	1 NPT	51.70	31.82
LP	3/4 NPT	51.70	31.91

### Notes:

1. Dimensions are approximate and should not be used to "rough-in" equipment.
2. Dimensions are subject to change without notice.
3. All dimensions are in inches (mm).
4.  Symbol indicates center of gravity.

## BOILER CERTIFIED RATINGS & CAPACITIES

<b>Fuel Type</b>	Natural/Propane Gas	<b>Boiler FLA</b>	11.2*
<b>Input BTU/hr.</b>	349,000 / 102 KW	<b>Boiler HP</b>	10.2
<b>Output BTU/hr.</b>	342,020 / 100 KW	<b>Min. Gas Pressure Required</b>	4" W.C.
<b>Electrical Requirements</b>	120 VAC/60 Hz/1PH (with neutral)	<b>Max. Gas Pressure Allowed</b>	14" W.C.
		<b>Operating Weight</b>	612 lbs. / 277.6 kg.

## BOILER TRIM & CONTROLS

<b>Main Gas Valve</b>	Dungs MBC	<b>Air Switch</b>	Huba
<b>Ignition Control</b>	Fenwal	<b>Flow Sensor</b>	SIKA
<b>Operating Control</b>	HeatNet®	<b>Blocked Flue Switch</b>	Cleveland NS2
<b>High Limit</b>	Jumo	<b>Blower Motor</b>	Ametek
<b>Relief Valve</b>	3/4" x 3/4" set @ 50 psi	<b>L.W.C.O.</b>	800

## A.S.M.E.

<b>ASME Sect IV Fire Side Htg Surface</b>	55.31 Sq. Ft. / 5.13 Sq. M.	<b>Design Data</b>	Max. 160 psig & 210°F
		<b>Water Volume</b>	13.4 gal. / 50.7 Liters
<b>ASME Sect IV Water Side Htg Surface</b>	77.72 Sq. Ft. / 7.22 Sq. M.		

\* Add circulator amps.

## BOILER TEMPERATURE RISE / PRESSURE DROP (Based on Full Input)

20°F / 11.1°C				30°F / 16.7°C				40°F / 22.2°C				50°F / 27.8°C				60°F / 33.3°C			
Flow Rate		Pressure Drop		Flow Rate		Pressure Drop		Flow Rate		Pressure Drop		Flow Rate		Pressure Drop		Flow Rate		Pressure Drop	
GPM	L/s	Ft	kPa	GPM	L/s	Ft	kPa	GPM	L/s	Ft	kPa	GPM	L/s	Ft	kPa	GPM	L/s	Ft	kPa
34.2	2.2	3.3	9.9	22.8	1.4	2.7	8.1	17.1	1.1	2.5	7.3	13.7	0.9	2.3	6.9	11.4	0.7	2.2	6.6

Flow GPM				Temp. Rise** (°F)				Vent Length (Equiv. Ft.)				Air Inlet Length (Equiv. Ft.)			
Min		Max		Min		Max		Min		Max		Min		Max	
11.4		34.2		20		100		6		100		0		100	

\*\* Min/Max delta t reflects boiler operation at full input. For applications requiring operation above/below these parameters please consult factory.

<b>REP FIRM</b>	_____
<b>SUBMITTED BY</b>	_____
<b>JOB NAME</b>	_____
<b>ARCHITECT</b>	_____
<b>ENGINEER</b>	_____
<b>CONTRACTOR</b>	_____
<b>DATE</b>	_____

## ENCORE 350 DUAL FUEL

**Category II or Category IV Appliance**  
(see Installation and Operation Manual for venting information)

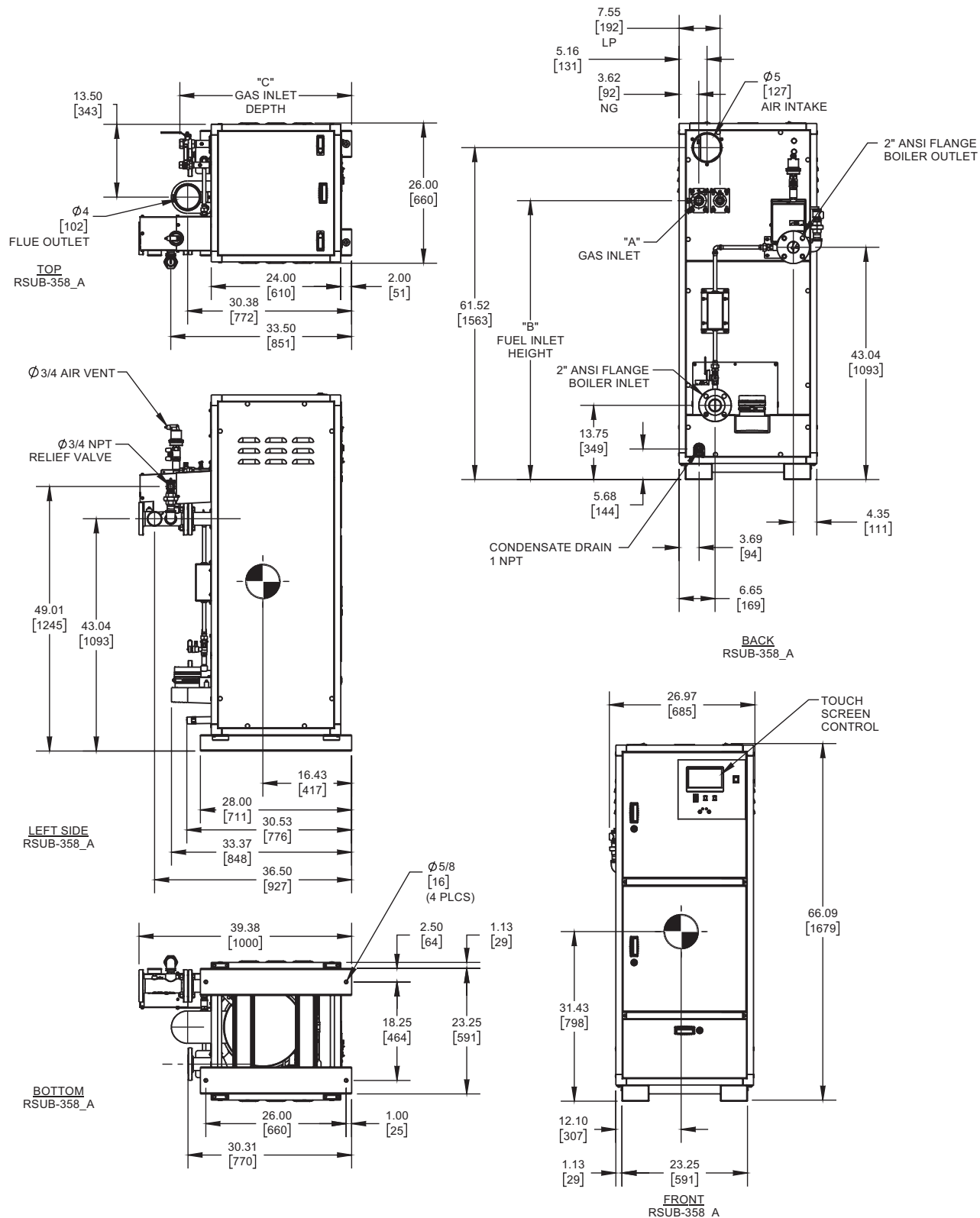


A Division of Mestek, Inc.  
Westfield, MA 01085  
(413) 564-5515

# ENCORE 400 DUAL FUEL

Category II or Category IV Appliance  
(see Installation and Operation Manual for venting information)

## INDOOR UNIT



GAS OPTION	"A"	"B"	"C"
NG	1 NPT	51.70	31.82
LP	3/4 NPT	51.70	31.91

### Notes:

1. Dimensions are approximate and should not be used to "rough-in" equipment.
2. Dimensions are subject to change without notice.
3. All dimensions are in inches [mm].
4. Symbol indicates center of gravity.

## BOILER CERTIFIED RATINGS & CAPACITIES

<b>Fuel Type</b>	Natural/Propane Gas	<b>Boiler FLA</b>	11.2*
<b>Input BTU/hr.</b>	399,000 / 117 KW	<b>Boiler HP</b>	11.7
<b>Output BTU/hr.</b>	391,818 / 115 KW	<b>Min. Gas Pressure Required</b>	4" W.C.
<b>Electrical Requirements</b>	120 VAC/60 Hz/1PH (with neutral)	<b>Max. Gas Pressure Allowed</b>	14" W.C.
		<b>Operating Weight</b>	612 lbs. / 277.6 kg.

## BOILER TRIM & CONTROLS

<b>Main Gas Valve</b>	Dungs MBC	<b>Air Switch</b>	Huba
<b>Ignition Control</b>	Fenwal	<b>Flow Sensor</b>	SIKA
<b>Operating Control</b>	HeatNet®	<b>Blocked Flue Switch</b>	Cleveland NS2
<b>High Limit</b>	Jumo	<b>Blower Motor</b>	Ametek
<b>Relief Valve</b>	3/4" x 3/4" set @ 50 psi	<b>L.W.C.O.</b>	800

## A.S.M.E.

<b>ASME Sect IV Fire Side Htg Surface</b>	55.31 Sq. Ft. / 5.13 Sq. M.	<b>Design Data</b>	Max. 160 psig & 210°F
		<b>Water Volume</b>	13.4 gal. / 50.7 Liters
<b>ASME Sect IV Water Side Htg Surface</b>	77.72 Sq. Ft. / 7.22 Sq. M.		

\* Add circulator amps.

## BOILER TEMPERATURE RISE / PRESSURE DROP (Based on Full Input)

20°F / 11.1°C				30°F / 16.7°C				40°F / 22.2°C				50°F / 27.8°C				60°F / 33.3°C			
Flow Rate		Pressure Drop		Flow Rate		Pressure Drop		Flow Rate		Pressure Drop		Flow Rate		Pressure Drop		Flow Rate		Pressure Drop	
GPM	L/s	Ft	kPa	GPM	L/s	Ft	kPa	GPM	L/s	Ft	kPa	GPM	L/s	Ft	kPa	GPM	L/s	Ft	kPa
39.2	2.5	3.6	10.9	26.1	1.6	2.9	8.6	19.6	1.2	2.6	7.7	15.7	1.0	2.4	7.2	13.1	0.8	2.3	6.8

Flow GPM				Temp. Rise** (°F)				Vent Length (Equiv. Ft.)				Air Inlet Length (Equiv. Ft.)			
Min		Max		Min		Max		Min		Max		Min		Max	
13.1		39.2		20		100		6		100		0		100	

\*\* Min/Max delta t reflects boiler operation at full input. For applications requiring operation above/below these parameters please consult factory.

<b>REP FIRM</b>	_____
<b>SUBMITTED BY</b>	_____
<b>JOB NAME</b>	_____
<b>ARCHITECT</b>	_____
<b>ENGINEER</b>	_____
<b>CONTRACTOR</b>	_____
<b>DATE</b>	_____

## ENCORE 400 DUAL FUEL

**Category II or Category IV Appliance**  
(see Installation and Operation Manual for venting information)

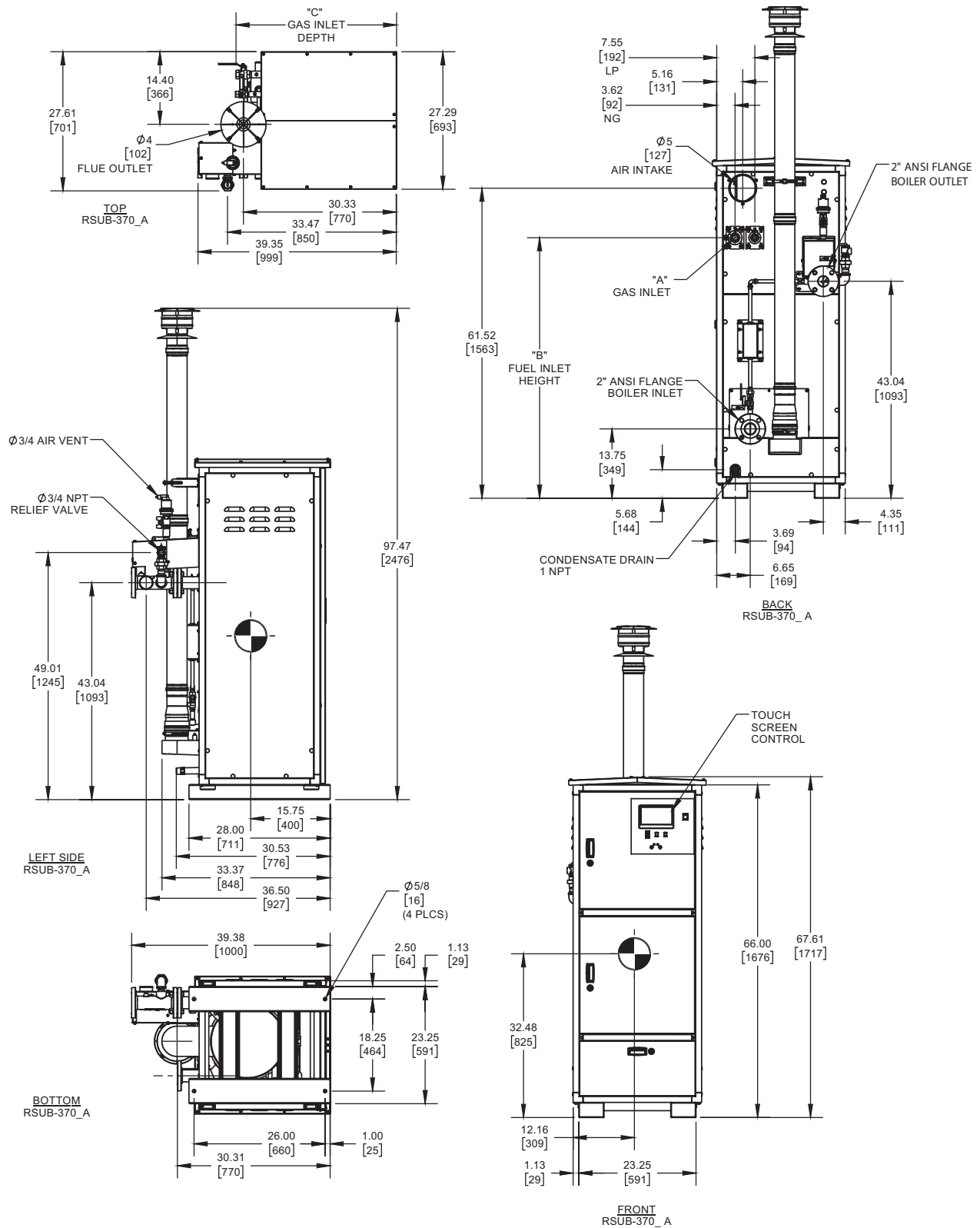


A Division of Mestek, Inc.  
Westfield, MA 01085  
(413) 564-5515

# ENCORE 400 DUAL FUEL

**Category II or Category IV Appliance**  
 (see Installation and Operation Manual for venting information)

## OUTDOOR UNIT



GAS OPTION	"A"	"B"	"C"
NG	1 NPT	51.70	31.82
LP	3/4 NPT	51.70	31.91

- Notes:**
1. Dimensions are approximate and should not be used to "rough-in" equipment.
  2. Dimensions are subject to change without notice.
  3. All dimensions are in inches (mm).
  4. Symbol indicates center of gravity.

## BOILER CERTIFIED RATINGS & CAPACITIES

<b>Fuel Type</b>	Natural/Propane Gas	<b>Boiler FLA</b>	11.2*
<b>Input BTU/hr.</b>	399,000 / 117 KW	<b>Boiler HP</b>	11.7
<b>Output BTU/hr.</b>	391,818 / 115 KW	<b>Min. Gas Pressure Required</b>	4" W.C.
<b>Electrical Requirements</b>	120 VAC/60 Hz/1PH (with neutral)	<b>Max. Gas Pressure Allowed</b>	14" W.C.
		<b>Operating Weight</b>	612 lbs. / 277.6 kg.

## BOILER TRIM & CONTROLS

<b>Main Gas Valve</b>	Dungs MBC	<b>Air Switch</b>	Huba
<b>Ignition Control</b>	Fenwal	<b>Flow Sensor</b>	SIKA
<b>Operating Control</b>	HeatNet®	<b>Blocked Flue Switch</b>	Cleveland NS2
<b>High Limit</b>	Jumo	<b>Blower Motor</b>	Ametek
<b>Relief Valve</b>	3/4" x 3/4" set @ 50 psi	<b>L.W.C.O.</b>	800

## A.S.M.E.

<b>ASME Sect IV Fire Side Htg Surface</b>	55.31 Sq. Ft. / 5.13 Sq. M.	<b>Design Data</b>	Max. 160 psig & 210°F
<b>ASME Sect IV Water Side Htg Surface</b>	77.72 Sq. Ft. / 7.22 Sq. M.	<b>Water Volume</b>	13.4 gal. / 50.7 Liters

\* Add circulator amps.

## BOILER TEMPERATURE RISE / PRESSURE DROP (Based on Full Input)

20°F / 11.1°C				30°F / 16.7°C				40°F / 22.2°C				50°F / 27.8°C				60°F / 33.3°C			
Flow Rate		Pressure Drop		Flow Rate		Pressure Drop		Flow Rate		Pressure Drop		Flow Rate		Pressure Drop		Flow Rate		Pressure Drop	
GPM	L/s	Ft	kPa	GPM	L/s	Ft	kPa	GPM	L/s	Ft	kPa	GPM	L/s	Ft	kPa	GPM	L/s	Ft	kPa
39.2	2.5	3.6	10.9	26.1	1.6	2.9	8.6	19.6	1.2	2.6	7.7	15.7	1.0	2.4	7.2	13.1	0.8	2.3	6.8

Flow GPM				Temp. Rise** (°F)				Vent Length (Equiv. Ft.)				Air Inlet Length (Equiv. Ft.)			
Min		Max		Min		Max		Min		Max		Min		Max	
13.1		39.2		20		100		6		100		0		100	

\*\* Min/Max delta t reflects boiler operation at full input. For applications requiring operation above/below these parameters please consult factory.

<b>REP FIRM</b>	_____
<b>SUBMITTED BY</b>	_____
<b>JOB NAME</b>	_____
<b>ARCHITECT</b>	_____
<b>ENGINEER</b>	_____
<b>CONTRACTOR</b>	_____
<b>DATE</b>	_____

## ENCORE 400 DUAL FUEL

**Category II or Category IV Appliance**  
(see Installation and Operation Manual for venting information)



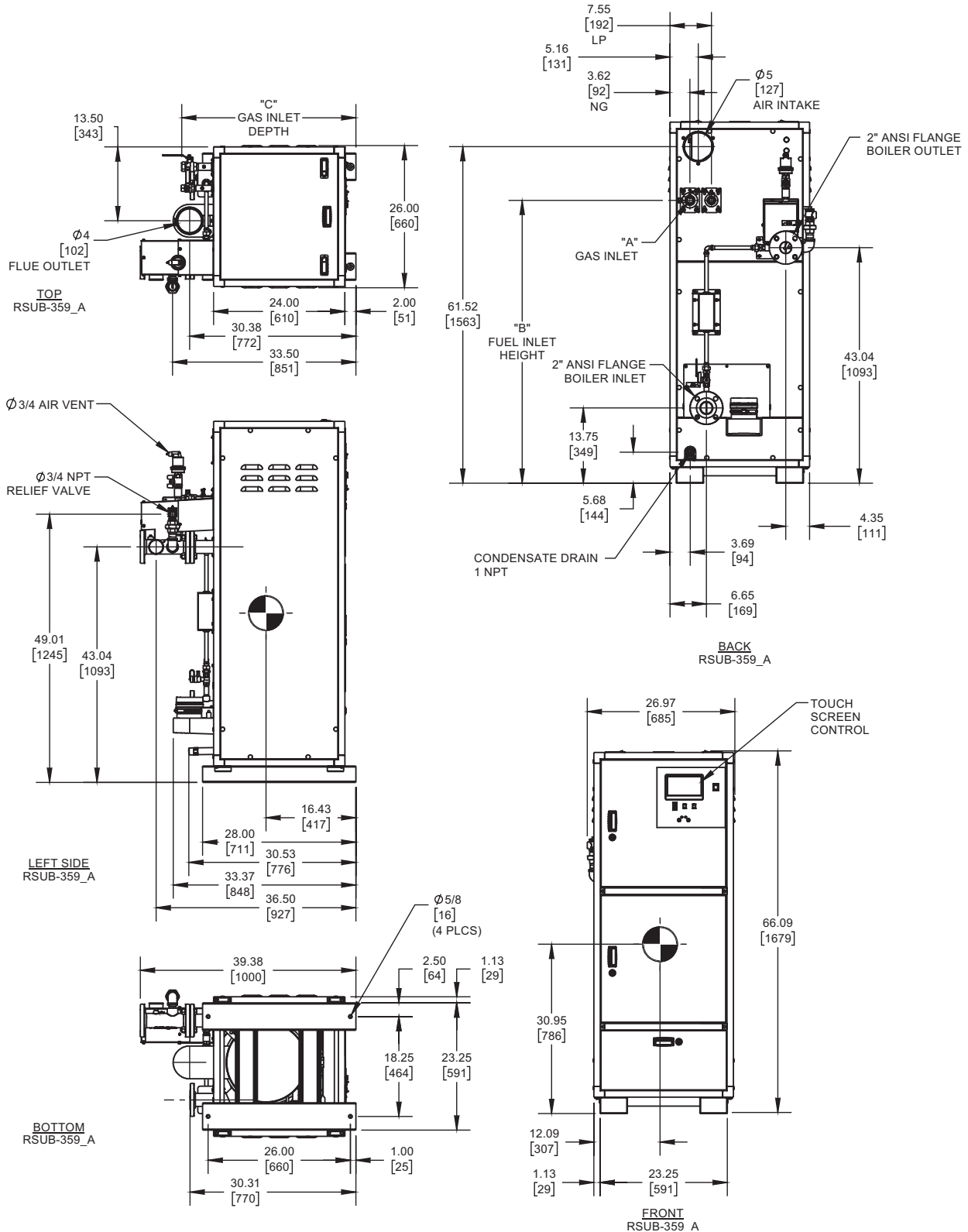
A Division of Mestek, Inc.  
Westfield, MA 01085  
(413) 564-5515



# ENCORE 500 DUAL FUEL

Category II or Category IV Appliance  
(see Installation and Operation Manual for venting information)

## INDOOR UNIT



GAS OPTION	"A"	"B"	"C"
NG	1 NPT	51.70	31.82
LP	3/4 NPT	51.70	31.91

### Notes:

1. Dimensions are approximate and should not be used to "rough-in" equipment.
2. Dimensions are subject to change without notice.
3. All dimensions are in inches [mm].
4. Symbol indicates center of gravity.

## BOILER CERTIFIED RATINGS & CAPACITIES

<b>Fuel Type</b>	Natural/Propane Gas	<b>Boiler FLA</b>	11.2*
<b>Input BTU/hr.</b>	500,000 / 147 KW	<b>Boiler HP</b>	14.6
<b>Output BTU/hr.</b>	490,000 / 144 KW	<b>Min. Gas Pressure Required</b>	4" W.C.
<b>Electrical Requirements</b>	120 VAC/60 Hz/1PH (with neutral)	<b>Max. Gas Pressure Allowed</b>	14" W.C.
		<b>Operating Weight</b>	633 lbs. / 287.1 kg.

## BOILER TRIM & CONTROLS

<b>Main Gas Valve</b>	Dungs MBC	<b>Air Switch</b>	Huba
<b>Ignition Control</b>	Fenwal	<b>Flow Sensor</b>	SIKA
<b>Operating Control</b>	HeatNet®	<b>Blocked Flue Switch</b>	Cleveland NS2
<b>High Limit</b>	Jumo	<b>Blower Motor</b>	Ametek
<b>Relief Valve</b>	3/4" x 3/4" set @ 50 psi	<b>L.W.C.O.</b>	800

## A.S.M.E.

<b>ASME Sect IV Fire Side Htg Surface</b>	72.91 Sq. Ft. / 6.77 Sq. M.	<b>Design Data</b>	Max. 160 psig & 210°F
		<b>Water Volume</b>	12.4 gal. / 46.9 Liters
<b>ASME Sect IV Water Side Htg Surface</b>	95.8 Sq. Ft. / 8.90 Sq. M.		

\* Add circulator amps.

## BOILER TEMPERATURE RISE / PRESSURE DROP (Based on Full Input)

20°F / 11.1°C				30°F / 16.7°C				40°F / 22.2°C				50°F / 27.8°C				60°F / 33.3°C			
Flow Rate		Pressure Drop		Flow Rate		Pressure Drop		Flow Rate		Pressure Drop		Flow Rate		Pressure Drop		Flow Rate		Pressure Drop	
GPM	L/s	Ft	kPa	GPM	L/s	Ft	kPa	GPM	L/s	Ft	kPa	GPM	L/s	Ft	kPa	GPM	L/s	Ft	kPa
49.0	3.1	4.3	12.9	32.7	2.1	3.2	9.7	24.5	1.5	2.8	8.4	19.6	1.2	2.6	7.7	16.3	1.0	2.4	7.2

Flow GPM				Temp. Rise** (°F)				Vent Length (Equiv. Ft.)				Air Inlet Length (Equiv. Ft.)			
Min		Max		Min		Max		Min		Max		Min		Max	
16.3		49.0		20		100		6		100		0		100	

\*\* Min/Max delta t reflects boiler operation at full input. For applications requiring operation above/below these parameters please consult factory.

<b>REP FIRM</b>	_____
<b>SUBMITTED BY</b>	_____
<b>JOB NAME</b>	_____
<b>ARCHITECT</b>	_____
<b>ENGINEER</b>	_____
<b>CONTRACTOR</b>	_____
<b>DATE</b>	_____

## ENCORE 500 DUAL FUEL

**Category II or Category IV Appliance**  
(see Installation and Operation Manual for venting information)

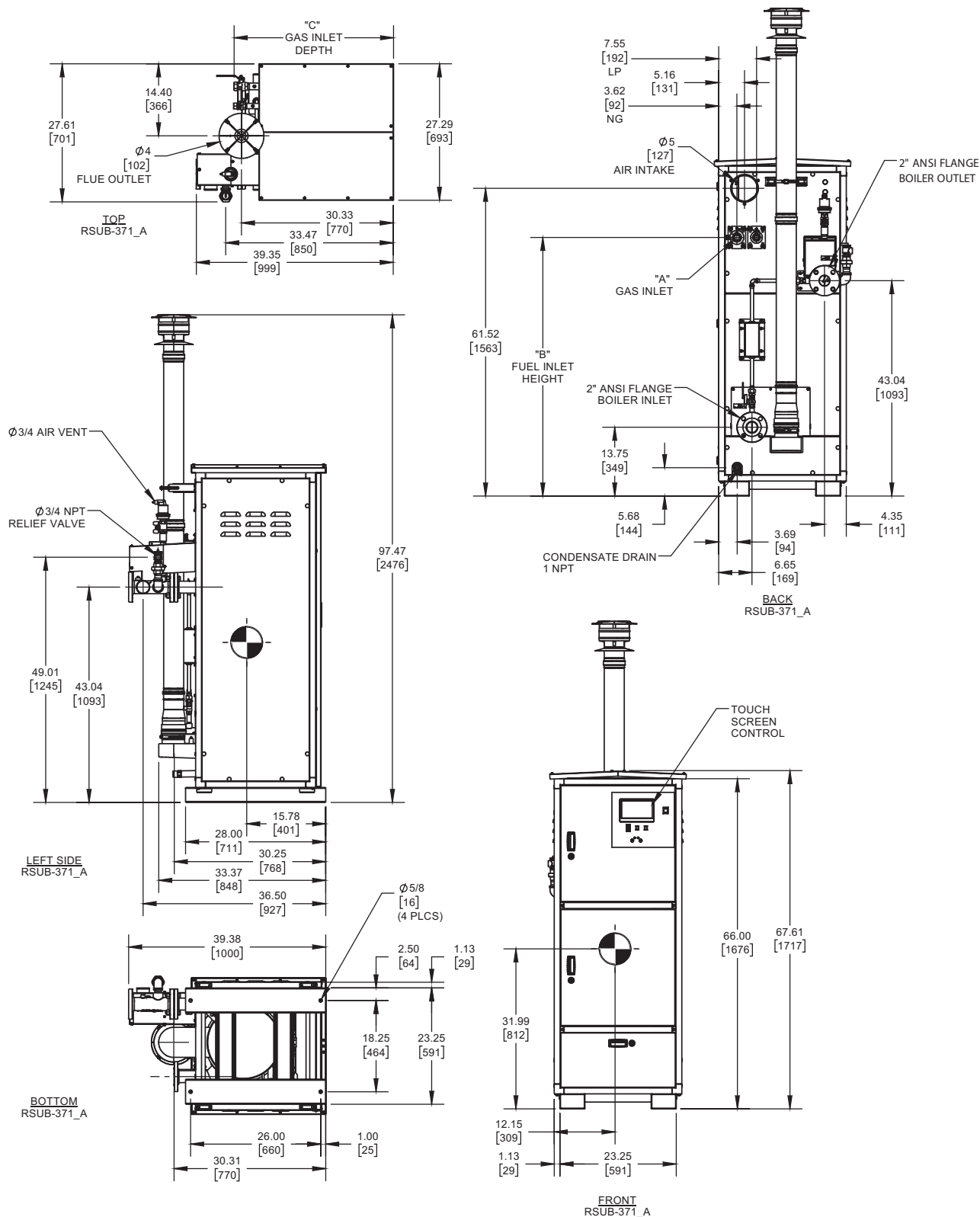


A Division of Mestek, Inc.  
Westfield, MA 01085  
(413) 564-5515

# ENCORE 500 DUAL FUEL


Category II or Category IV Appliance  
(see Installation and Operation Manual for venting information)

## OUTDOOR UNIT



GAS OPTION	"A"	"B"	"C"
NG	1 NPT	51.70	31.82
LP	3/4 NPT	51.70	31.91

### Notes:

1. Dimensions are approximate and should not be used to "rough-in" equipment.
2. Dimensions are subject to change without notice.
3. All dimensions are in inches (mm).
4.  Symbol indicates center of gravity.

## BOILER CERTIFIED RATINGS & CAPACITIES

<b>Fuel Type</b>	Natural/Propane Gas	<b>Boiler FLA</b>	11.2*
<b>Input BTU/hr.</b>	500,000 / 147 KW	<b>Boiler HP</b>	14.6
<b>Output BTU/hr.</b>	490,000 / 144 KW	<b>Min. Gas Pressure Required</b>	4" W.C.
<b>Electrical Requirements</b>	120 VAC/60 Hz/1PH (with neutral)	<b>Max. Gas Pressure Allowed</b>	14" W.C.
		<b>Operating Weight</b>	633 lbs. / 287.1 kg.

## BOILER TRIM & CONTROLS

<b>Main Gas Valve</b>	Dungs MBC	<b>Air Switch</b>	Huba
<b>Ignition Control</b>	Fenwal	<b>Flow Sensor</b>	SIKA
<b>Operating Control</b>	HeatNet®	<b>Blocked Flue Switch</b>	Cleveland NS2
<b>High Limit</b>	Jumo	<b>Blower Motor</b>	Ametek
<b>Relief Valve</b>	3/4" x 3/4" set @ 50 psi	<b>L.W.C.O.</b>	800

## A.S.M.E.

<b>ASME Sect IV Fire Side Htg Surface</b>	72.91 Sq. Ft. / 6.77 Sq. M.	<b>Design Data</b>	Max. 160 psig & 210°F
		<b>Water Volume</b>	12.4 gal. / 46.9 Liters
<b>ASME Sect IV Water Side Htg Surface</b>	95.8 Sq. Ft. / 8.90 Sq. M.		

\* Add circulator amps.

## BOILER TEMPERATURE RISE / PRESSURE DROP (Based on Full Input)

20°F / 11.1°C				30°F / 16.7°C				40°F / 22.2°C				50°F / 27.8°C				60°F / 33.3°C			
Flow Rate		Pressure Drop		Flow Rate		Pressure Drop		Flow Rate		Pressure Drop		Flow Rate		Pressure Drop		Flow Rate		Pressure Drop	
GPM	L/s	Ft	kPa	GPM	L/s	Ft	kPa	GPM	L/s	Ft	kPa	GPM	L/s	Ft	kPa	GPM	L/s	Ft	kPa
49.0	3.1	4.3	12.9	32.7	2.1	3.2	9.7	24.5	1.5	2.8	8.4	19.6	1.2	2.6	7.7	16.3	1.0	2.4	7.2

Flow GPM				Temp. Rise** (°F)				Vent Length (Equiv. Ft.)				Air Inlet Length (Equiv. Ft.)			
Min		Max		Min		Max		Min		Max		Min		Max	
16.3		49.0		20		100		6		100		0		100	

\*\* Min/Max delta t reflects boiler operation at full input. For applications requiring operation above/below these parameters please consult factory.

<b>REP FIRM</b>	_____
<b>SUBMITTED BY</b>	_____
<b>JOB NAME</b>	_____
<b>ARCHITECT</b>	_____
<b>ENGINEER</b>	_____
<b>CONTRACTOR</b>	_____
<b>DATE</b>	_____

## ENCORE 500 DUAL FUEL

**Category II or Category IV Appliance**  
(see Installation and Operation Manual for venting information)

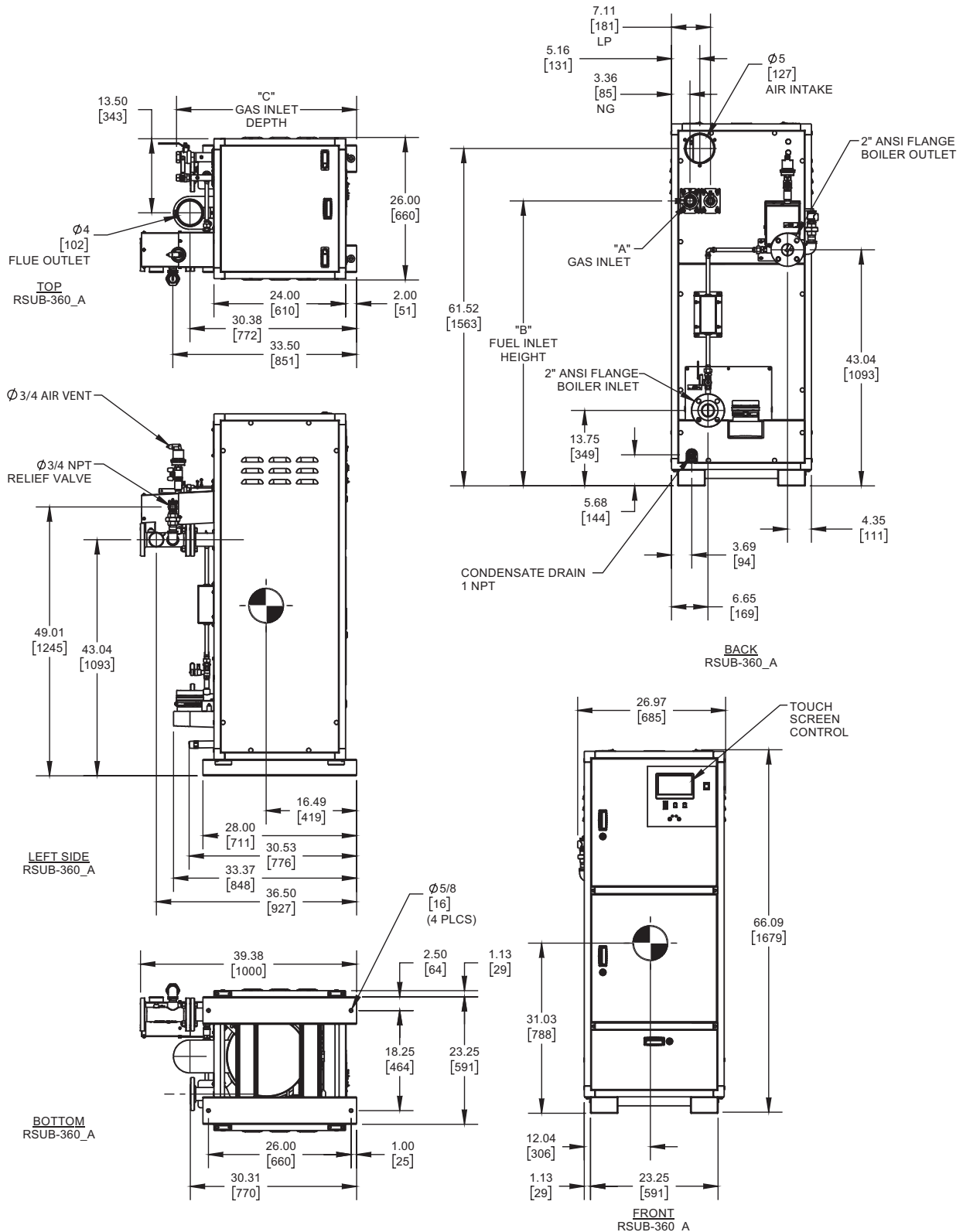


A Division of Mestek, Inc.  
Westfield, MA 01085  
(413) 564-5515

# ENCORE 600 DUAL FUEL

Category II or Category IV Appliance  
(see Installation and Operation Manual for venting information)

## INDOOR UNIT



GAS OPTION	"A"	"B"	"C"
NG	1-1/4 NPT	51.95	32.83
LP	3/4 NPT	51.95	32.84

### Notes:

1. Dimensions are approximate and should not be used to "rough-in" equipment.
2. Dimensions are subject to change without notice.
3. All dimensions are in inches [mm].
4. Symbol indicates center of gravity.

## BOILER CERTIFIED RATINGS & CAPACITIES

<b>Fuel Type</b>	Natural/Propane Gas	<b>Boiler FLA</b>	17.1 *
<b>Input BTU/hr.</b>	600,000 / 176 KW	<b>Boiler HP</b>	17.5
<b>Output BTU/hr.</b>	586,800 / 172 KW	<b>Min. Gas Pressure Required</b>	4" W.C.
<b>Electrical Requirements</b>	120 VAC/60 Hz/1PH (with neutral)	<b>Max. Gas Pressure Allowed</b>	14" W.C.
		<b>Operating Weight</b>	633 lbs. / 287.1 kg.

## BOILER TRIM & CONTROLS

<b>Main Gas Valve</b>	Dungs MBC	<b>Air Switch</b>	Huba
<b>Ignition Control</b>	Fenwal	<b>Flow Sensor</b>	SIKA
<b>Operating Control</b>	HeatNet®	<b>Blocked Flue Switch</b>	Cleveland NS2
<b>High Limit</b>	Jumo	<b>Blower Motor</b>	Ametek
<b>Relief Valve</b>	3/4" x 3/4" set @ 50 psi	<b>L.W.C.O.</b>	800

## A.S.M.E.

<b>ASME Sect IV Fire Side Htg Surface</b>	72.91 Sq. Ft. / 6.77 Sq. M.	<b>Design Data</b>	Max. 160 psig & 210°F
<b>ASME Sect IV Water Side Htg Surface</b>	95.8 Sq. Ft. / 8.90 Sq. M.	<b>Water Volume</b>	12.4 gal. / 46.9 Liters

\* Add circulator amps.

## BOILER TEMPERATURE RISE / PRESSURE DROP (Based on Full Input)

20°F / 11.1°C				30°F / 16.7°C				40°F / 22.2°C				50°F / 27.8°C				60°F / 33.3°C			
Flow Rate		Pressure Drop		Flow Rate		Pressure Drop		Flow Rate		Pressure Drop		Flow Rate		Pressure Drop		Flow Rate		Pressure Drop	
GPM	L/s	Ft	kPa	GPM	L/s	Ft	kPa	GPM	L/s	Ft	kPa	GPM	L/s	Ft	kPa	GPM	L/s	Ft	kPa
58.7	3.7	4.2	12.7	39.1	2.5	3.3	9.9	29.4	1.9	2.9	8.8	23.5	1.5	2.7	8.2	19.6	1.2	2.6	7.8

Flow GPM				Temp. Rise** (°F)				Vent Length (Equiv. Ft.)				Air Inlet Length (Equiv. Ft.)			
Min		Max		Min		Max		Min		Max		Min		Max	
19.6		58.7		20		100		6		100		0		100	

\*\* Min/Max delta t reflects boiler operation at full input. For applications requiring operation above/below these parameters please consult factory.

<b>REP FIRM</b>	_____
<b>SUBMITTED BY</b>	_____
<b>JOB NAME</b>	_____
<b>ARCHITECT</b>	_____
<b>ENGINEER</b>	_____
<b>CONTRACTOR</b>	_____
<b>DATE</b>	_____

## ENCORE 600 DUAL FUEL

**Category II or Category IV Appliance**  
(see Installation and Operation Manual for venting information)

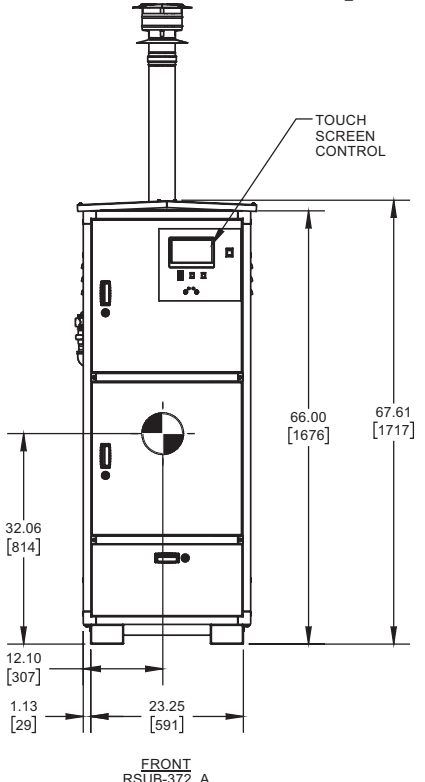
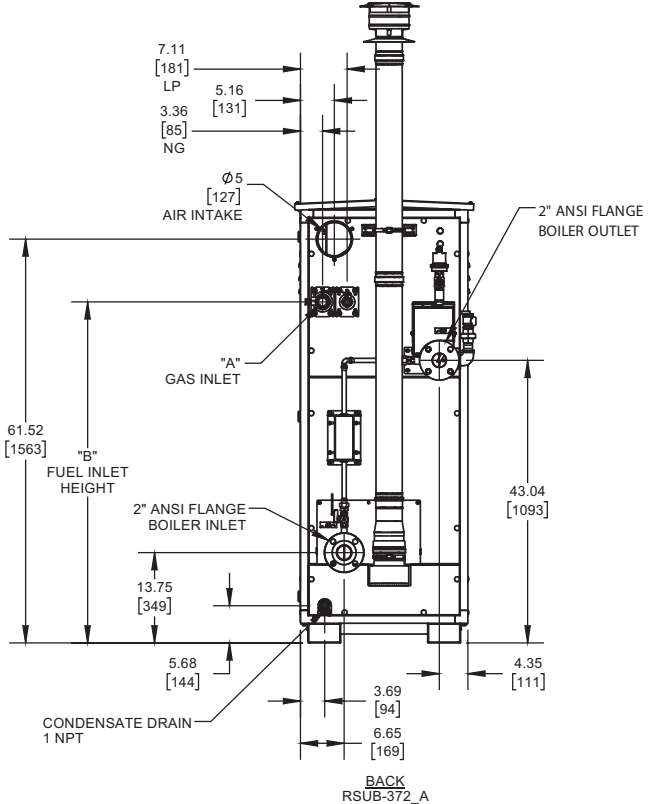
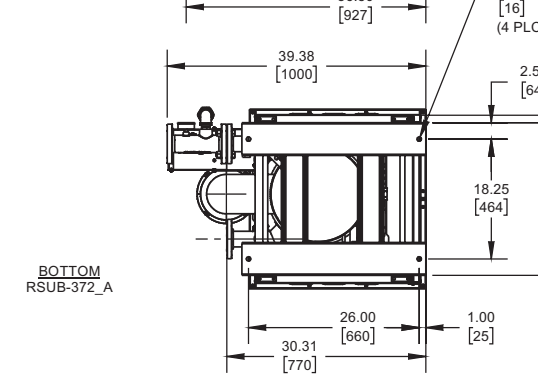
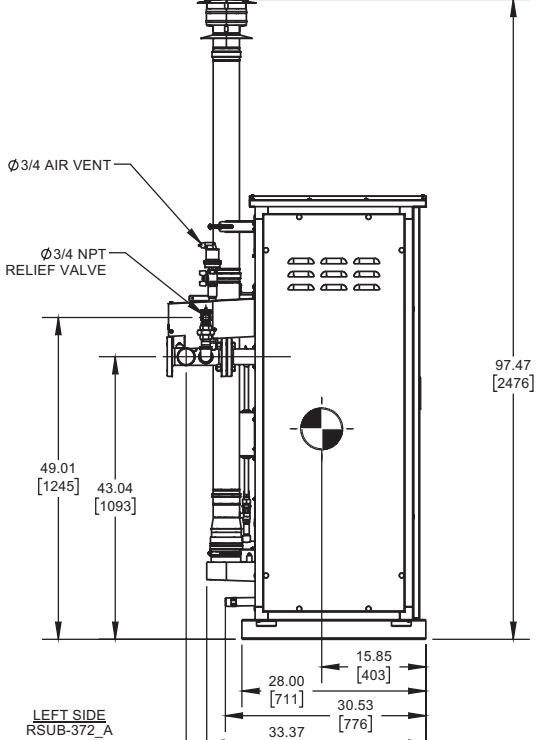
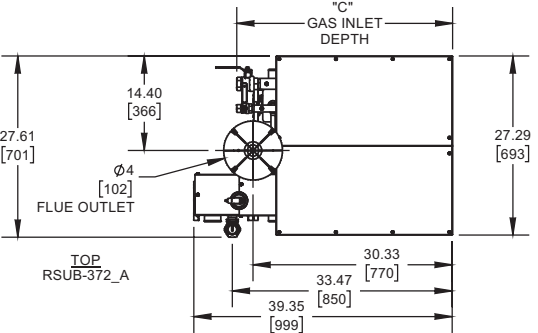


A Division of Mestek, Inc.  
Westfield, MA 01085  
(413) 564-5515

# ENCORE 600 DUAL FUEL

**Category II or Category IV Appliance**  
(see Installation and Operation Manual for venting information)

## OUTDOOR UNIT



GAS OPTION	"A"	"B"	"C"
NG	1-1/4 NPT	51.95	32.83
LP	3/4 NPT	51.95	32.84

- Notes:**
1. Dimensions are approximate and should not be used to "rough-in" equipment.
  2. Dimensions are subject to change without notice.
  3. All dimensions are in inches (mm).
  4. Symbol indicates center of gravity.

## BOILER CERTIFIED RATINGS & CAPACITIES

<b>Fuel Type</b>	Natural/Propane Gas	<b>Boiler FLA</b>	17.1 *
<b>Input BTU/hr.</b>	600,000 / 176 KW	<b>Boiler HP</b>	17.5
<b>Output BTU/hr.</b>	585,600 / 172 KW	<b>Min. Gas Pressure Required</b>	4" W.C.
<b>Electrical Requirements</b>	120 VAC/60 Hz/1PH (with neutral)	<b>Max. Gas Pressure Allowed</b>	14" W.C.
		<b>Operating Weight</b>	612 lbs. / 277.6 kg.

## BOILER TRIM & CONTROLS

<b>Main Gas Valve</b>	Dungs MBC	<b>Air Switch</b>	Huba
<b>Ignition Control</b>	Fenwal	<b>Flow Sensor</b>	SIKA
<b>Operating Control</b>	HeatNet®	<b>Blocked Flue Switch</b>	Cleveland NS2
<b>High Limit</b>	Jumo	<b>Blower Motor</b>	Ametek
<b>Relief Valve</b>	3/4" x 3/4" set @ 50 psi	<b>L.W.C.O.</b>	800

## A.S.M.E.

<b>ASME Sect IV Fire Side Htg Surface</b>	72.91 Sq. Ft. / 6.77 Sq. M.	<b>Design Data</b>	Max. 160 psig & 210°F
		<b>Water Volume</b>	12.4 gal. / 46.9 Liters
<b>ASME Sect IV Water Side Htg Surface</b>	95.8 Sq. Ft. / 8.90 Sq. M.		

\* Add circulator amps.

## BOILER TEMPERATURE RISE / PRESSURE DROP (Based on Full Input)

20°F / 11.1°C				30°F / 16.7°C				40°F / 22.2°C				50°F / 27.8°C				60°F / 33.3°C			
Flow Rate		Pressure Drop		Flow Rate		Pressure Drop		Flow Rate		Pressure Drop		Flow Rate		Pressure Drop		Flow Rate		Pressure Drop	
GPM	L/s	Ft	kPa	GPM	L/s	Ft	kPa	GPM	L/s	Ft	kPa	GPM	L/s	Ft	kPa	GPM	L/s	Ft	kPa
58.6	3.7	4.2	12.7	39.1	2.5	3.3	9.9	29.3	1.8	2.9	8.8	23.4	1.5	2.7	8.2	19.5	1.2	2.6	7.8

Flow GPM				Temp. Rise** (°F)				Vent Length (Equiv. Ft.)				Air Inlet Length (Equiv. Ft.)			
Min		Max		Min		Max		Min		Max		Min		Max	
19.5		58.6		20		100		6		100		0		100	

\*\* Min/Max delta t reflects boiler operation at full input. For applications requiring operation above/below these parameters please consult factory.

<b>REP FIRM</b>	_____
<b>SUBMITTED BY</b>	_____
<b>JOB NAME</b>	_____
<b>ARCHITECT</b>	_____
<b>ENGINEER</b>	_____
<b>CONTRACTOR</b>	_____
<b>DATE</b>	_____

## ENCORE 600 DUAL FUEL

**Category II or Category IV Appliance**  
(see Installation and Operation Manual for venting information)



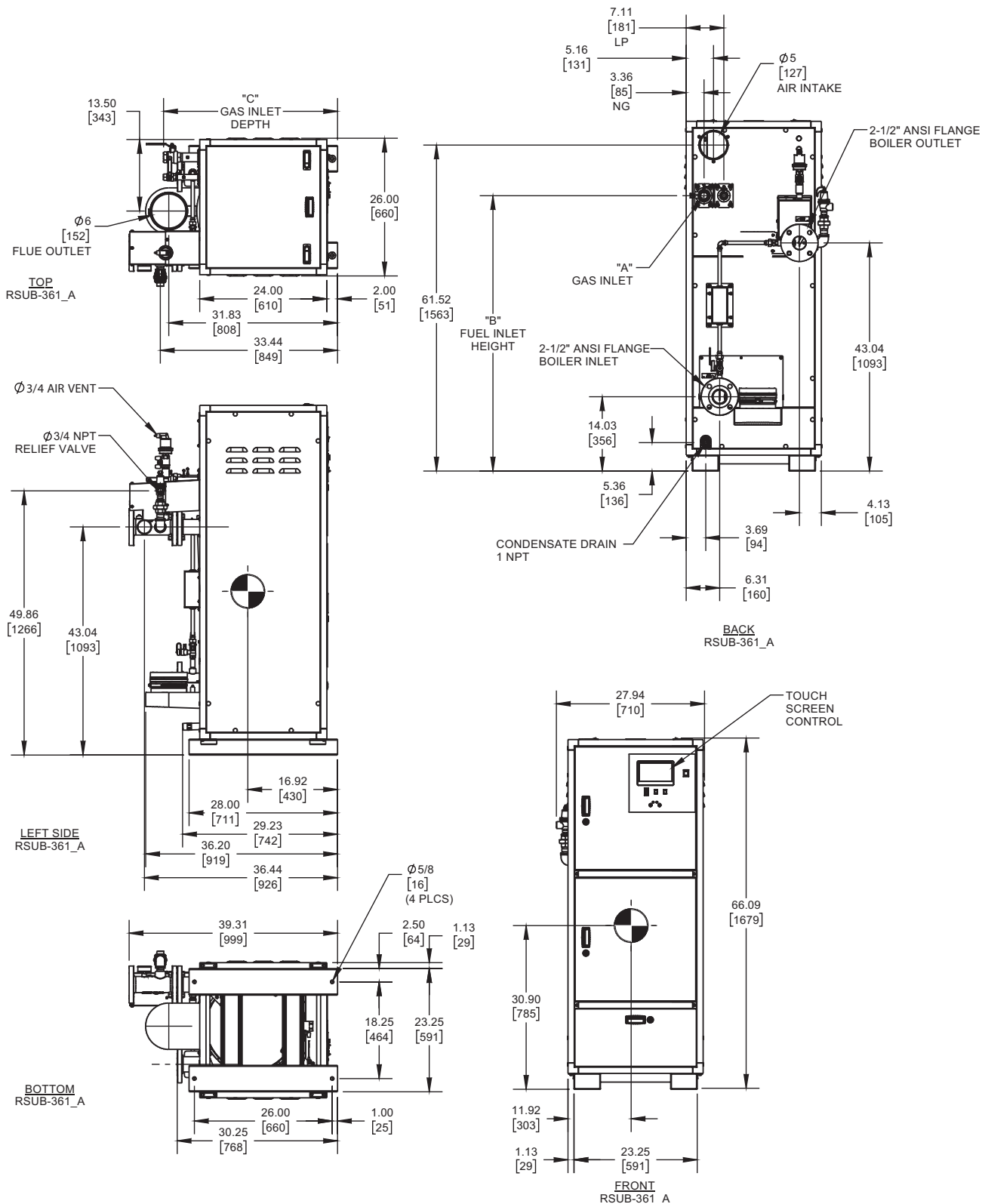
A Division of Mestek, Inc.  
Westfield, MA 01085  
(413) 564-5515



# ENCORE 725 DUAL FUEL

Category II or Category IV Appliance  
(see Installation and Operation Manual for venting information)

## INDOOR UNIT



GAS OPTION	"A"	"B"	"C"
NG	1-1/4 NPT	51.96	32.83
LP	3/4 NPT	51.96	32.84

**Notes:**

1. Dimensions are approximate and should not be used to "rough-in" equipment.
2. Dimensions are subject to change without notice.
3. All dimensions are in inches [mm].
4. Symbol indicates center of gravity.

## BOILER CERTIFIED RATINGS & CAPACITIES

<b>Fuel Type</b>	Natural/Propane Gas	<b>Boiler FLA</b>	17.1 *
<b>Input BTU/hr.</b>	725,000 / 212 KW	<b>Boiler HP</b>	21.1
<b>Output BTU/hr.</b>	707,600 / 207 KW	<b>Min. Gas Pressure Required</b>	4" W.C.
<b>Electrical Requirements</b>	120 VAC/60 Hz/1PH (with neutral)	<b>Max. Gas Pressure Allowed</b>	14" W.C.
		<b>Operating Weight</b>	725 lbs. / 328.9 kg.

## BOILER TRIM & CONTROLS

<b>Main Gas Valve</b>	Dungs MBC	<b>Air Switch</b>	Huba
<b>Ignition Control</b>	Fenwal	<b>Flow Sensor</b>	SIKA
<b>Operating Control</b>	HeatNet®	<b>Blocked Flue Switch</b>	Cleveland NS2
<b>High Limit</b>	Jumo	<b>Blower Motor</b>	Ametek
<b>Relief Valve</b>	3/4" x 3/4" set @ 50 psi	<b>L.W.C.O.</b>	800

## A.S.M.E.

<b>ASME Sect IV Fire Side Htg Surface</b>	84.6 Sq. Ft. / 7.85 Sq. M.	<b>Design Data</b>	Max. 160 psig & 210°F
		<b>Water Volume</b>	17.4 gal. / 65.8 Liters
<b>ASME Sect IV Water Side Htg Surface</b>	112.16 Sq. Ft. / 10.42 Sq. M.		

\* Add circulator amps.

## BOILER TEMPERATURE RISE / PRESSURE DROP (Based on Full Input)

20°F / 11.1°C				30°F / 16.7°C				40°F / 22.2°C				50°F / 27.8°C				60°F / 33.3°C			
Flow Rate		Pressure Drop		Flow Rate		Pressure Drop		Flow Rate		Pressure Drop		Flow Rate		Pressure Drop		Flow Rate		Pressure Drop	
GPM	L/s	Ft	kPa	GPM	L/s	Ft	kPa	GPM	L/s	Ft	kPa	GPM	L/s	Ft	kPa	GPM	L/s	Ft	kPa
70.8	4.5	4.9	14.8	47.2	3.0	3.7	11.0	35.4	2.2	3.2	9.5	28.3	1.8	2.9	8.7	23.6	1.5	2.7	8.2

Flow GPM				Temp. Rise** (°F)				Vent Length (Equiv. Ft.)				Air Inlet Length (Equiv. Ft.)			
Min		Max		Min		Max		Min		Max		Min		Max	
23.6		70.8		20		100		6		100		0		100	

\*\* Min/Max delta t reflects boiler operation at full input. For applications requiring operation above/below these parameters please consult factory.

<b>REP FIRM</b>	_____
<b>SUBMITTED BY</b>	_____
<b>JOB NAME</b>	_____
<b>ARCHITECT</b>	_____
<b>ENGINEER</b>	_____
<b>CONTRACTOR</b>	_____
<b>DATE</b>	_____

## ENCORE 725 DUAL FUEL

**Category II or Category IV Appliance**  
(see Installation and Operation Manual for venting information)

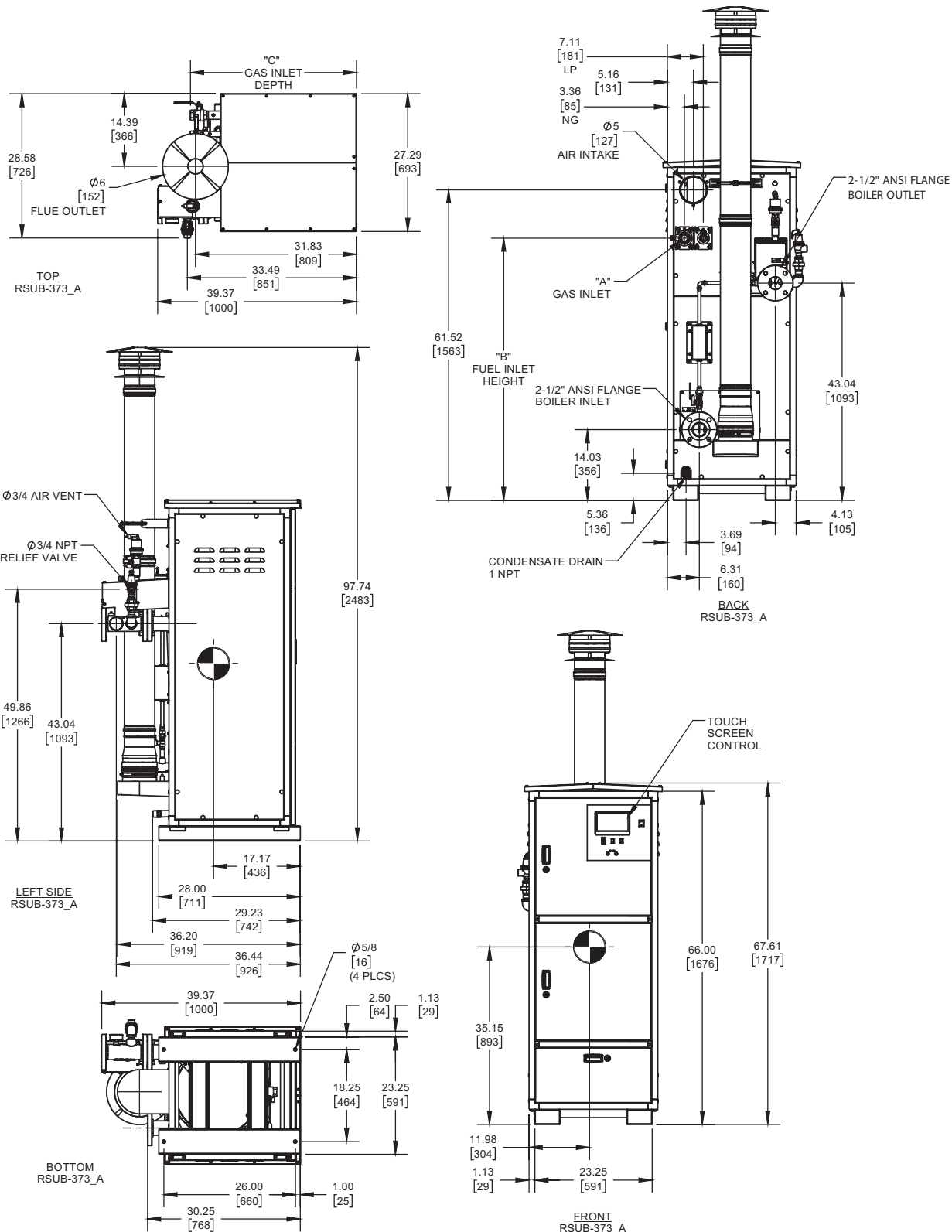


A Division of Mestek, Inc.  
Westfield, MA 01085  
(413) 564-5515

# ENCORE 725 DUAL FUEL

Category II or Category IV Appliance  
(see Installation and Operation Manual for venting information)

## OUTDOOR UNIT



GAS OPTION	"A"	"B"	"C"
NG	1-1/4 NPT	51.95	32.83
LP	3/4 NPT	51.95	32.84

**Notes:**

1. Dimensions are approximate and should not be used to "rough-in" equipment.
2. Dimensions are subject to change without notice.
3. All dimensions are in inches (mm).
4. Symbol indicates center of gravity.

## BOILER CERTIFIED RATINGS & CAPACITIES

<b>Fuel Type</b>	Natural/Propane Gas	<b>Boiler FLA</b>	17.1 *
<b>Input BTU/hr.</b>	725,000 / 212 KW	<b>Boiler HP</b>	21.1
<b>Output BTU/hr.</b>	705,425 / 207 KW	<b>Min. Gas Pressure Required</b>	4" W.C.
<b>Electrical Requirements</b>	120 VAC/60 Hz/1PH (with neutral)	<b>Max. Gas Pressure Allowed</b>	14" W.C.
		<b>Operating Weight</b>	725 lbs. / 328.9 kg.

## BOILER TRIM & CONTROLS

<b>Main Gas Valve</b>	Dungs MBC	<b>Air Switch</b>	Huba
<b>Ignition Control</b>	Fenwal	<b>Flow Sensor</b>	SIKA
<b>Operating Control</b>	HeatNet®	<b>Blocked Flue Switch</b>	Cleveland NS2
<b>High Limit</b>	Jumo	<b>Blower Motor</b>	Ametek
<b>Relief Valve</b>	3/4" x 3/4" set @ 50 psi	<b>L.W.C.O.</b>	800

## A.S.M.E.

<b>ASME Sect IV Fire Side Htg Surface</b>	84.6 Sq. Ft. / 7.85 Sq. M.	<b>Design Data</b>	Max. 160 psig & 210°F
<b>ASME Sect IV Water Side Htg Surface</b>	112.16 Sq. Ft. / 10.42 Sq. M.	<b>Water Volume</b>	17.4 gal. / 65.8 Liters

\* Add circulator amps.

## BOILER TEMPERATURE RISE / PRESSURE DROP (Based on Full Input)

20°F / 11.1°C				30°F / 16.7°C				40°F / 22.2°C				50°F / 27.8°C				60°F / 33.3°C			
Flow Rate		Pressure Drop		Flow Rate		Pressure Drop		Flow Rate		Pressure Drop		Flow Rate		Pressure Drop		Flow Rate		Pressure Drop	
GPM	L/s	Ft	kPa	GPM	L/s	Ft	kPa	GPM	L/s	Ft	kPa	GPM	L/s	Ft	kPa	GPM	L/s	Ft	kPa
70.6	4.5	4.9	14.7	47.0	3.0	3.7	11.0	35.3	2.2	3.2	9.5	28.2	1.8	2.9	8.7	23.5	1.5	2.7	8.2

Flow GPM				Temp. Rise** (°F)				Vent Length (Equiv. Ft.)				Air Inlet Length (Equiv. Ft.)			
Min		Max		Min		Max		Min		Max		Min		Max	
23.5		70.6		20		100		6		100		0		100	

\*\* Min/Max delta t reflects boiler operation at full input. For applications requiring operation above/below these parameters please consult factory.

<b>REP FIRM</b>	_____
<b>SUBMITTED BY</b>	_____
<b>JOB NAME</b>	_____
<b>ARCHITECT</b>	_____
<b>ENGINEER</b>	_____
<b>CONTRACTOR</b>	_____
<b>DATE</b>	_____

## ENCORE 725 DUAL FUEL

**Category II or Category IV Appliance**  
(see Installation and Operation Manual for venting information)

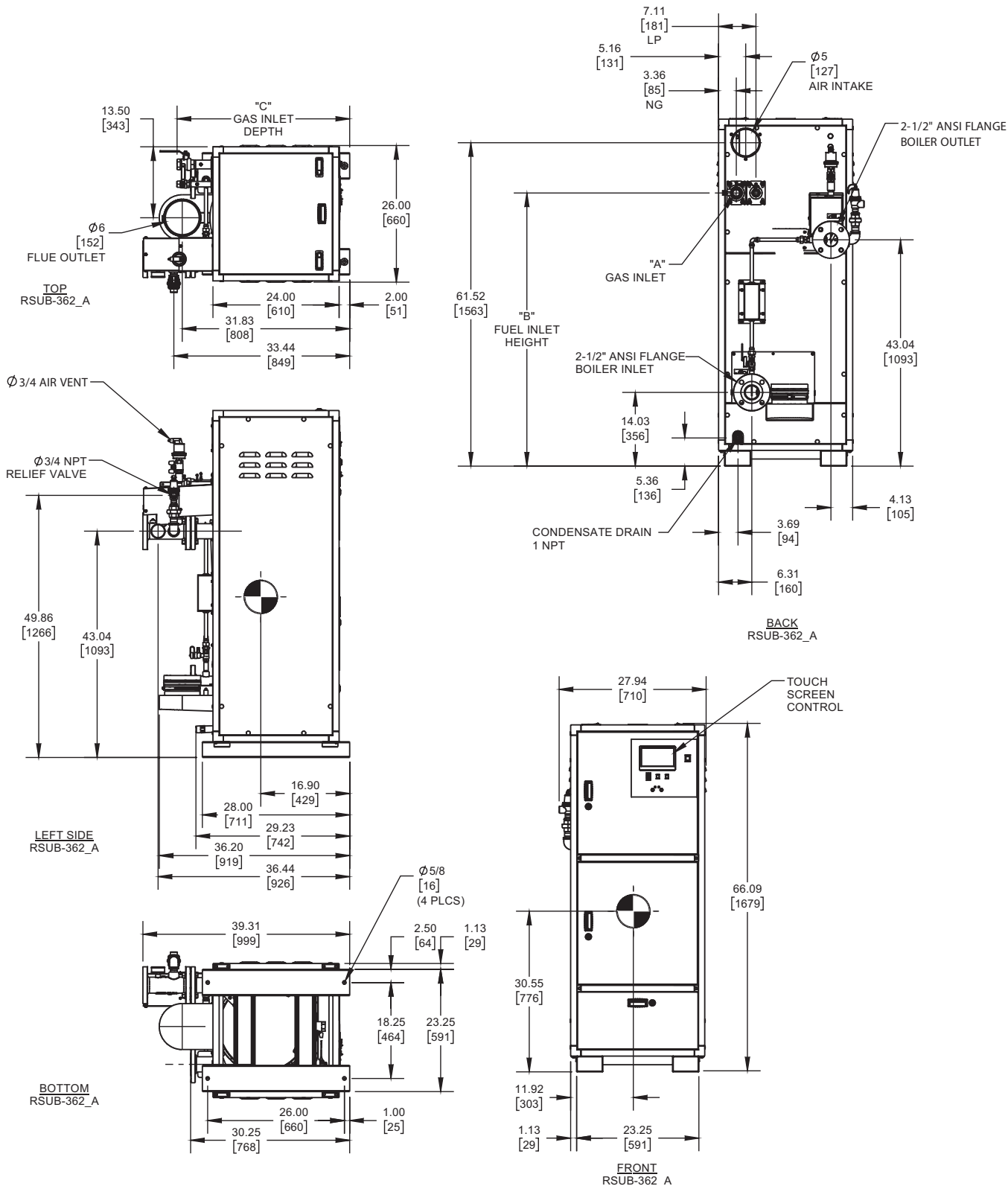


A Division of Mestek, Inc.  
Westfield, MA 01085  
(413) 564-5515

# ENCORE 850 DUAL FUEL

Category II or Category IV Appliance  
(see Installation and Operation Manual for venting information)

## INDOOR UNIT



GAS OPTION	"A"	"B"	"C"
NG	1-1/4 NPT	51.96	32.83
LP	3/4 NPT	51.96	32.84

**Notes:**

1. Dimensions are approximate and should not be used to "rough-in" equipment.
2. Dimensions are subject to change without notice.
3. All dimensions are in inches [mm].
4. Symbol indicates center of gravity.

## BOILER CERTIFIED RATINGS & CAPACITIES

<b>Fuel Type</b>	Natural/Propane Gas	<b>Boiler FLA</b>	17.1 *
<b>Input BTU/hr.</b>	850,000 / 249 KW	<b>Boiler HP</b>	24.6
<b>Output BTU/hr.</b>	823,650 / 241 KW	<b>Min. Gas Pressure Required</b>	4" W.C.
<b>Electrical Requirements</b>	120 VAC/60 Hz/1PH (with neutral)	<b>Max. Gas Pressure Allowed</b>	14" W.C.
		<b>Operating Weight</b>	747 lbs. / 338.8 kg.

## BOILER TRIM & CONTROLS

<b>Main Gas Valve</b>	Dungs MBC	<b>Air Switch</b>	Huba
<b>Ignition Control</b>	Fenwal	<b>Flow Sensor</b>	SIKA
<b>Operating Control</b>	HeatNet®	<b>Blocked Flue Switch</b>	Cleveland NS2
<b>High Limit</b>	Jumo	<b>Blower Motor</b>	Ametek
<b>Relief Valve</b>	3/4" x 3/4" set @ 50 psi	<b>L.W.C.O.</b>	800

## A.S.M.E.

<b>ASME Sect IV Fire Side Htg Surface</b>	99.8 Sq. Ft. / 9.27 Sq. M.	<b>Design Data</b>	Max. 160 psig & 210°F
		<b>Water Volume</b>	16.4 gal. / 62.1 Liters
<b>ASME Sect IV Water Side Htg Surface</b>	127.87 Sq. Ft. / 11.88 Sq. M.		

\* Add circulator amps.

## BOILER TEMPERATURE RISE / PRESSURE DROP (Based on Full Input)

20°F / 11.1°C				30°F / 16.7°C				40°F / 22.2°C				50°F / 27.8°C				60°F / 33.3°C			
Flow Rate		Pressure Drop		Flow Rate		Pressure Drop		Flow Rate		Pressure Drop		Flow Rate		Pressure Drop		Flow Rate		Pressure Drop	
GPM	L/s	Ft	kPa	GPM	L/s	Ft	kPa	GPM	L/s	Ft	kPa	GPM	L/s	Ft	kPa	GPM	L/s	Ft	kPa
82.4	5.2	5.7	17.1	54.9	3.5	4.1	12.1	41.2	2.6	3.4	10.2	33.0	2.1	3.1	9.2	27.5	1.7	2.9	8.6

Flow GPM				Temp. Rise** (°F)				Vent Length (Equiv. Ft.)				Air Inlet Length (Equiv. Ft.)			
Min		Max		Min		Max		Min		Max		Min		Max	
27.5		82.4		20		100		6		100		0		100	

\*\* Min/Max delta t reflects boiler operation at full input. For applications requiring operation above/below these parameters please consult factory.

<b>REP FIRM</b>	_____
<b>SUBMITTED BY</b>	_____
<b>JOB NAME</b>	_____
<b>ARCHITECT</b>	_____
<b>ENGINEER</b>	_____
<b>CONTRACTOR</b>	_____
<b>DATE</b>	_____

## ENCORE 850 DUAL FUEL

**Category II or Category IV Appliance**  
(see Installation and Operation Manual for venting information)

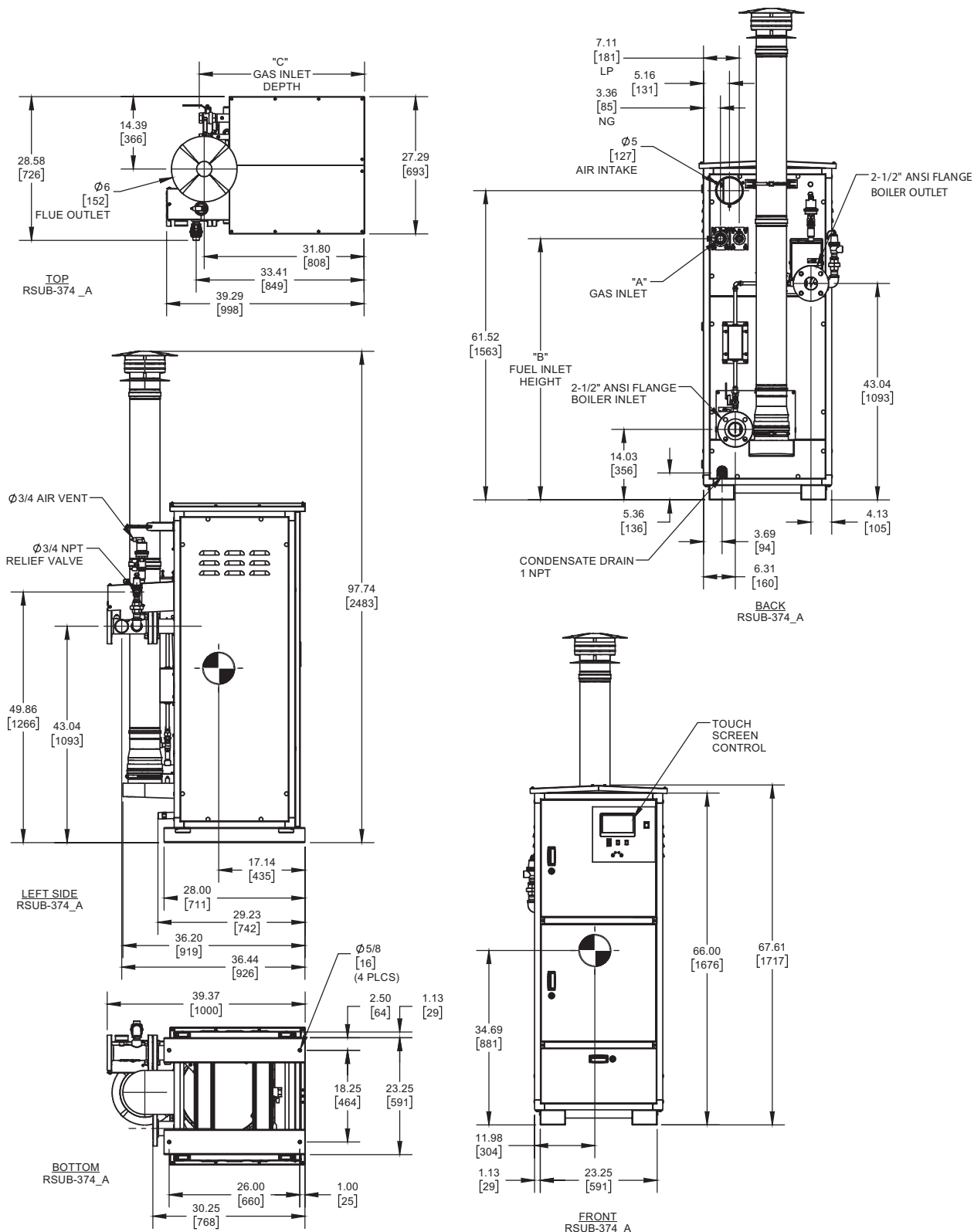


A Division of Mestek, Inc.  
Westfield, MA 01085  
(413) 564-5515

# ENCORE 850 DUAL FUEL

Category II or Category IV Appliance  
(see Installation and Operation Manual for venting information)

## OUTDOOR UNIT



GAS OPTION	"A"	"B"	"C"
NG	1-1/4 NPT	51.95	32.83
LP	3/4 NPT	51.95	32.84

### Notes:

1. Dimensions are approximate and should not be used to "rough-in" equipment.
2. Dimensions are subject to change without notice.
3. All dimensions are in inches (mm).
4. Symbol indicates center of gravity.

## BOILER CERTIFIED RATINGS & CAPACITIES

<b>Fuel Type</b>	Natural/Propane Gas	<b>Boiler FLA</b>	17.1 *
<b>Input BTU/hr.</b>	850,000 / 249 KW	<b>Boiler HP</b>	24.5
<b>Output BTU/hr.</b>	820,250 / 241 KW	<b>Min. Gas Pressure Required</b>	4" W.C.
<b>Electrical Requirements</b>	120 VAC/60 Hz/1PH (with neutral)	<b>Max. Gas Pressure Allowed</b>	14" W.C.
		<b>Operating Weight</b>	747 lbs. / 338.8 kg.

## BOILER TRIM & CONTROLS

<b>Main Gas Valve</b>	Dungs MBC	<b>Air Switch</b>	Huba
<b>Ignition Control</b>	Fenwal	<b>Flow Sensor</b>	SIKA
<b>Operating Control</b>	HeatNet®	<b>Blocked Flue Switch</b>	Cleveland NS2
<b>High Limit</b>	Jumo	<b>Blower Motor</b>	Ametek
<b>Relief Valve</b>	3/4" x 3/4" set @ 50 psi	<b>L.W.C.O.</b>	800

## A.S.M.E.

<b>ASME Sect IV Fire Side Htg Surface</b>	99.8 Sq. Ft. / 9.27 Sq. M.	<b>Design Data</b>	Max. 160 psig & 210°F
		<b>Water Volume</b>	16.4 gal. / 62.1 Liters
<b>ASME Sect IV Water Side Htg Surface</b>	127.87 Sq. Ft. / 11.88 Sq. M.		

\* Add circulator amps.

## BOILER TEMPERATURE RISE / PRESSURE DROP (Based on Full Input)

20°F / 11.1°C				30°F / 16.7°C				40°F / 22.2°C				50°F / 27.8°C				60°F / 33.3°C			
Flow Rate		Pressure Drop		Flow Rate		Pressure Drop		Flow Rate		Pressure Drop		Flow Rate		Pressure Drop		Flow Rate		Pressure Drop	
GPM	L/s	Ft	kPa	GPM	L/s	Ft	kPa	GPM	L/s	Ft	kPa	GPM	L/s	Ft	kPa	GPM	L/s	Ft	kPa
82.1	5.2	5.7	17.0	54.7	3.5	4.0	12.1	41.0	2.6	3.4	10.2	32.8	2.1	3.1	9.2	27.4	1.7	2.9	8.6

Flow GPM				Temp. Rise** (°F)				Vent Length (Equiv. Ft.)				Air Inlet Length (Equiv. Ft.)			
Min		Max		Min		Max		Min		Max		Min		Max	
27.4		82.1		20		100		6		100		0		100	

\*\* Min/Max delta t reflects boiler operation at full input. For applications requiring operation above/below these parameters please consult factory.

<b>REP FIRM</b>	_____
<b>SUBMITTED BY</b>	_____
<b>JOB NAME</b>	_____
<b>ARCHITECT</b>	_____
<b>ENGINEER</b>	_____
<b>CONTRACTOR</b>	_____
<b>DATE</b>	_____

## ENCORE 850 DUAL FUEL

**Category II or Category IV Appliance**  
(see Installation and Operation Manual for venting information)



A Division of Mestek, Inc.  
Westfield, MA 01085  
(413) 564-5515